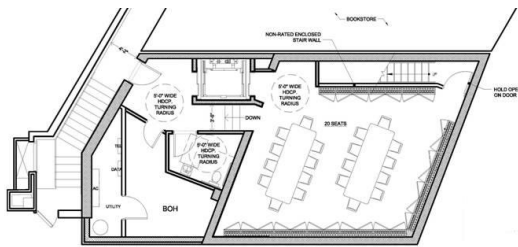


Four Seasons Eno Wine Bar

Primary Service: Architecture
Type: Hospitality
Owner/Client: Four Seasons Hotels & Resorts
Location: Washington, D.C.
Cost: 1,200,000
Square Footage: 2,187 sf (Renovation) 893 sf (Addition)
Contact: Ms. Stacy Kamps
Director of Capital Projects
Strategic Hotels & Resorts
Project Manager: James Sanders &
Kim Vierheilig, AIA, LEED® AP, BD&C
Project Number: 2.2638.27.1

LAN
LAN ASSOCIATES
ENGINEERING
PLANNING
ARCHITECTURE
SURVEYING, INC.
WWW.LAN-NJ.COM



Proposed basement floor plan.

Project Scope:

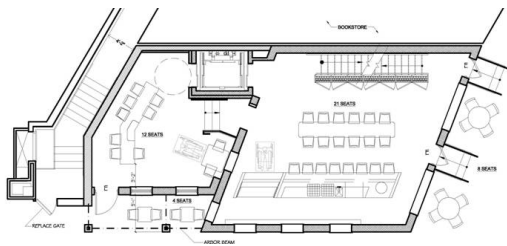
LAN partnered with Sowinski Sullivan Architects (SSA) to provide architecture and engineering service for a new wine bar adjacent the Four Seasons Georgetown. As part of the job two existing rowhouses were to be combined and renovated to house the wine bar. The Eno Wine Bar specializes in offering a variety of wine, cheese and chocolates. Total indoor seating capacity is 65 with outdoor seating of 12.

Services Performed:

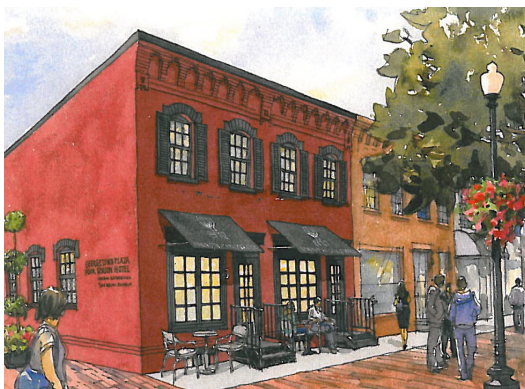
- Architectural Design & Documentation
- Mechanical, Electrical, & Plumbing Engineering

Program Highlights:

- Conversion of an existing two-story townhouse. Review and approval by Georgetown Historic Board. Design within tight property lines and access.



Proposed ground floor plan.



A conceptual rendering of the exterior.